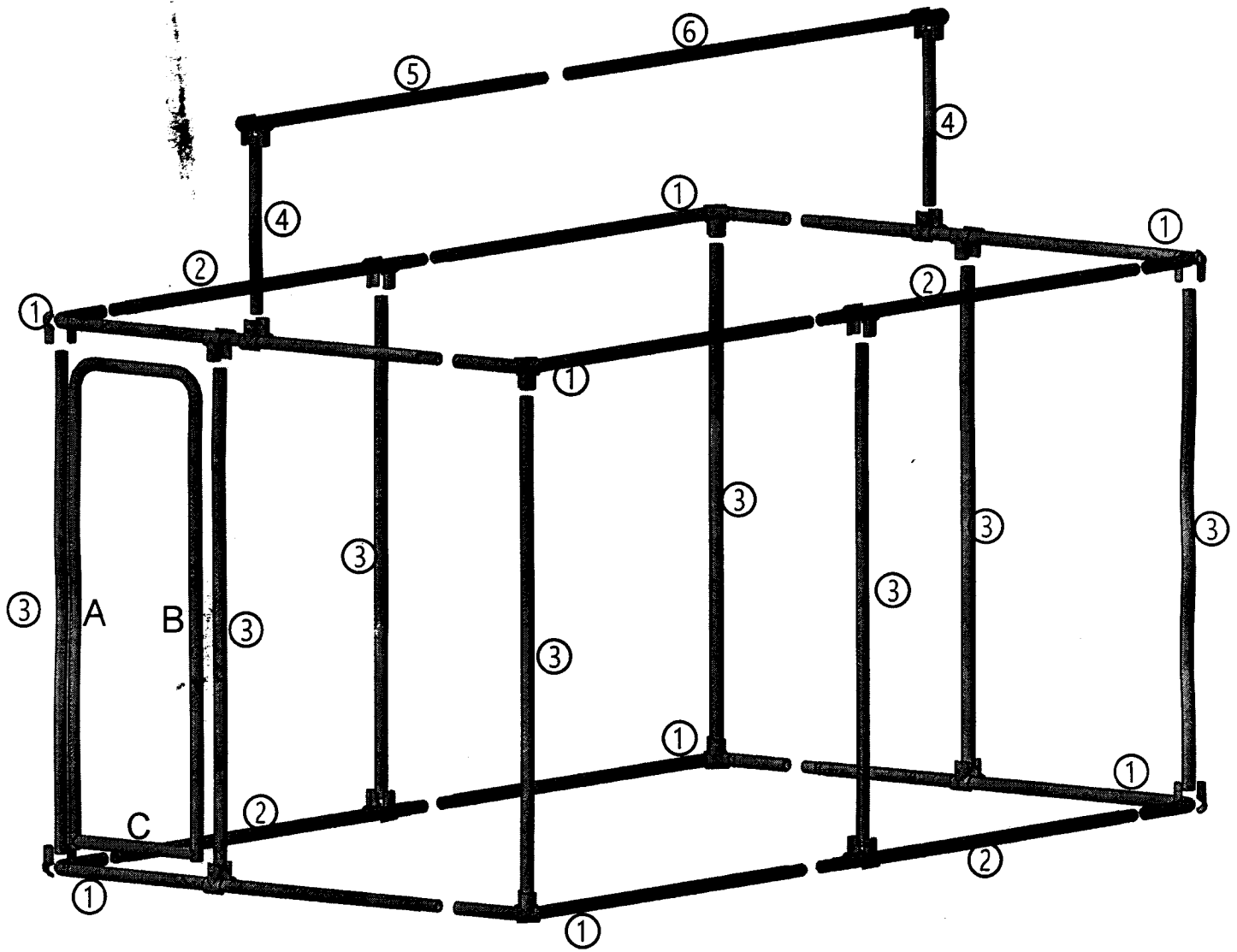


# 4x2.3x1.83m GALVANIZED DOG RUN ASSEMBLY






-Tools supplied: Wire-strainer, Wrench, and Drill-head

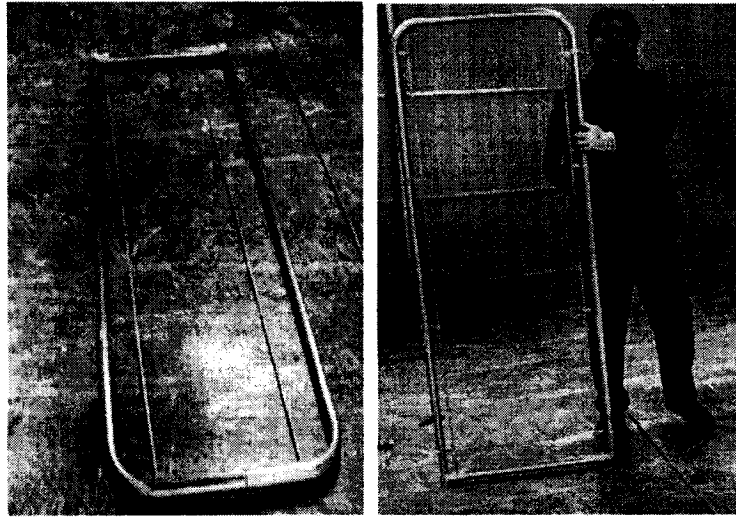
-Tools required: Drill, and Pliers

-Assembly time: About 1 hour (with 2 people)

# LIST OF MATERIALS

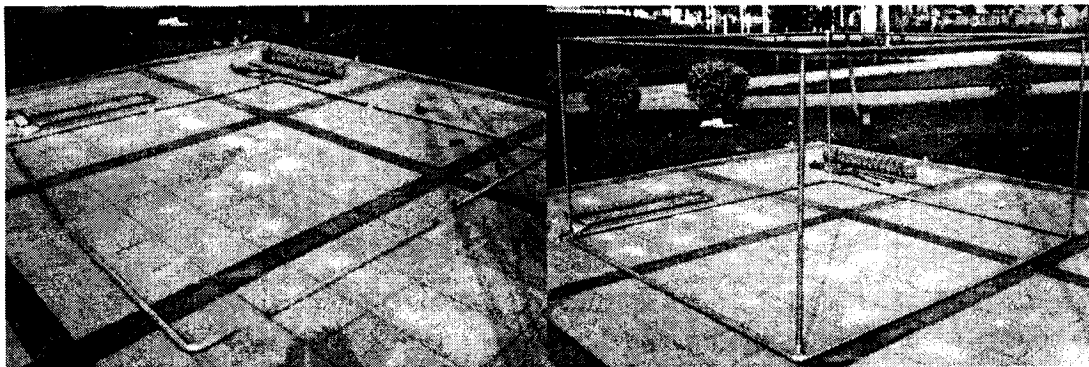
PART NO.	DIMENSION	STYLE PIC	QUANTITY
①	300+2065mm		8
②	1765mm		4
③	1765mm		8
A B C	300+1700mm 320+1700mm 500mm	Door left Door right Door bottom	1 1 1
PARTS	PARTS PACKGE	DOOR HINGE           ×2 CLIP                   ×36 HOOK                   ×18 REBAR                  ×4 SCREW M8×50:         ×18 M10×50:       ×4 SELF TAPPING SCREW M5.5×19       ×50 SECURIY LOCK         × 1 WIRE GRIP             ×2 WRENCH SOCKET 12/14MM:     ×1 8MM:1(for self tapping screw)	1

## Step1: Gate Installation

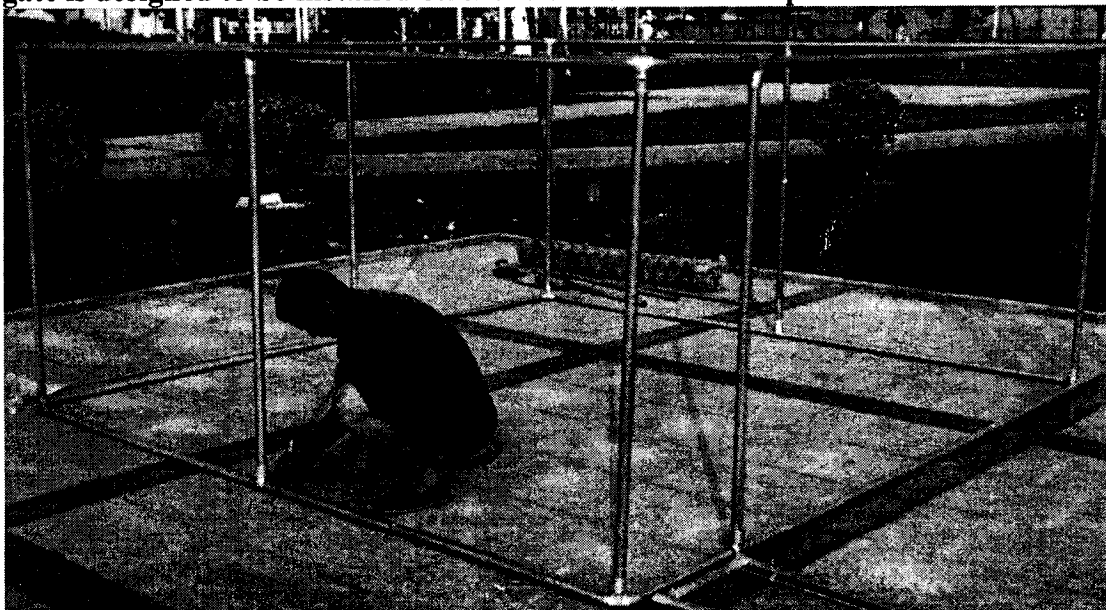


Fix both ends of the C-tube with the the pair of clips and secure with 2 (M8X50MM) screws, then insert the B-tube into the A-tube. When the “U” shape frame is assembled - then insert the ends of the A-tube and the B-tube into the ends of the C-tube. Install the chain-link mesh onto the gate frame. Then insert the two round rod into the the edges of the chain-link mesh, and then use 4 pairs of hooks to fix the round rods and tube. Finally, use the bind-wire to fix the chain-link mesh to the gate frame to make the gate rigid and strong. (Note: loosen the the clips on the post to allow adjustment and exact fitment).

## Step 2: Frame installation



**Note: The gate is designed to be installed on the left side of a corner position.**



Insert the number-1 tubes into the number-2 tubes - then start by assembling the lower frame by joining the swagged pieces together and laying them out for assembly. Keep the vertical tubes ready to

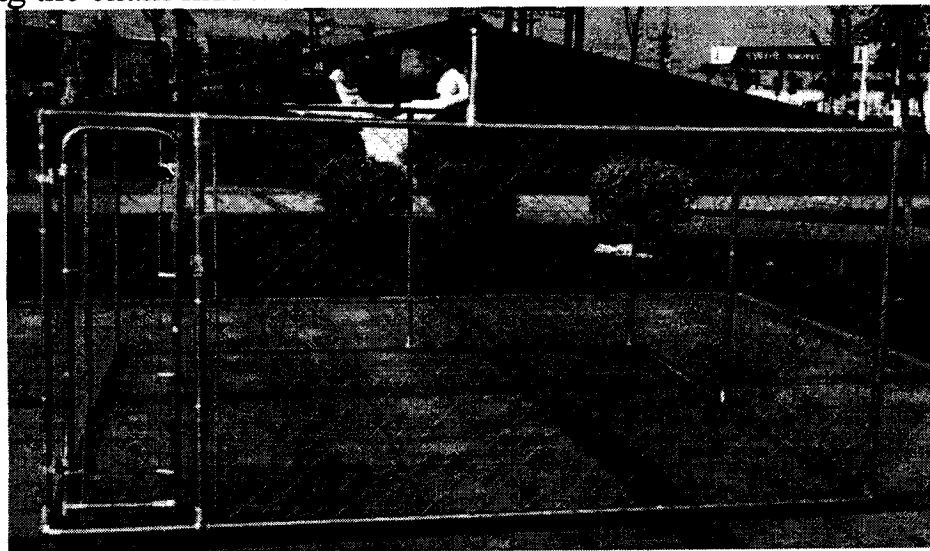
accept the top tube frame. Put the top tube frame of the dog run together and then install the clips (loosely) for the middle vertical tubes. (Note, the next step requires 2 people). Pick up the assembled upper frame and place it on the vertical tubes. Then attach the four corner vertical tubes with the clips to the top and bottom frames and secure tightly with the socket-wrench.

Step 3: Installing the gate into the frame



Use the door hinges (and the big set of screws) to fix the door to the frame. Then install the security-lock on the dog run. Tie bind wire to fix the top and bottom of the gate with chain-link mesh and make the gate safe and strong by using the screw gun with the drill to put a self-tapping screw through the pilot holes in the tubes - this also makes the dog run stronger.

Step 4: Installing the chain link mesh



Start by unrolling the compressed chain-link mesh roll on the ground and extending it. Then roll it again. Insert 1 piece of round rod into the edge of the chain-link mesh roll, and then hook the round rod with the door post - another person is then required to unroll the chain-link mesh around the frame of the dog run.

If the chain-link mesh is too long, remove some of the wire at the desired length (at least 15-20 cm from the door). Use the wire strainer to tighten the chain-link mesh to a good fit. Insert another round rod piece into the edge of the chain-link mesh. Attach the hooked round rod to the frame - the wire strainer can be bent down to secure the chain-link mesh once the final tension has been achieved. To secure the top and the bottom of the dog run - tie some binding wire to fix the chain-link mesh to the frame. Finally, ensure that the clips are fixed tightly and securely to the frame by using the self-tapping screws. Now your large dog run is complete and ready for your dog.